

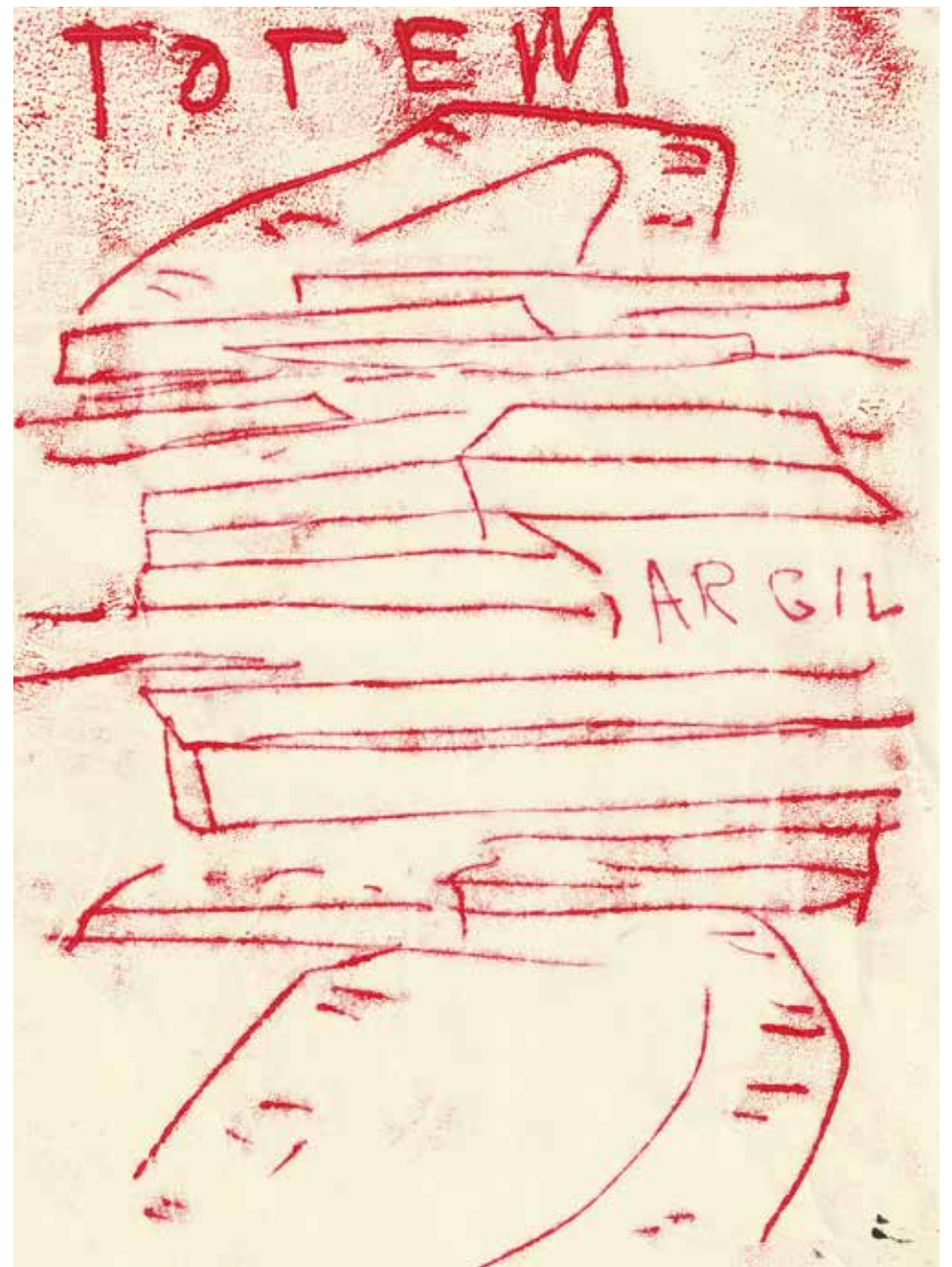
SURCHARGE

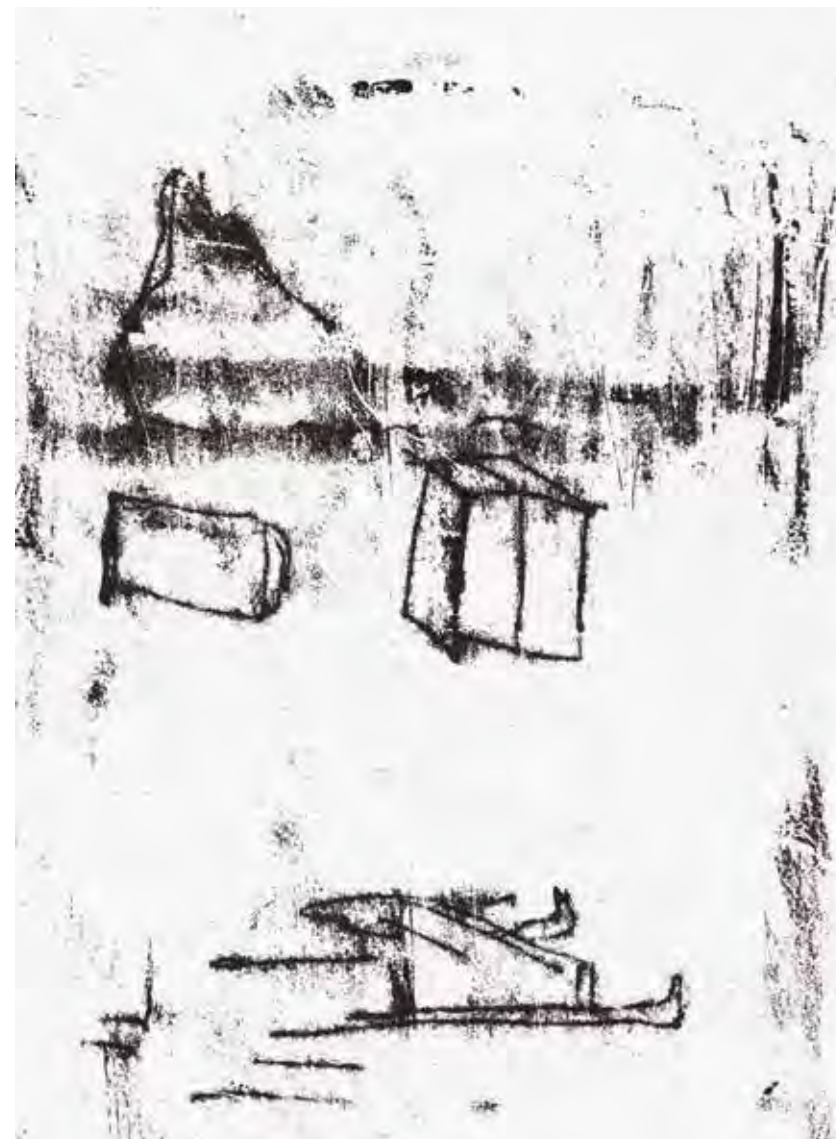
SUR\CHARGE

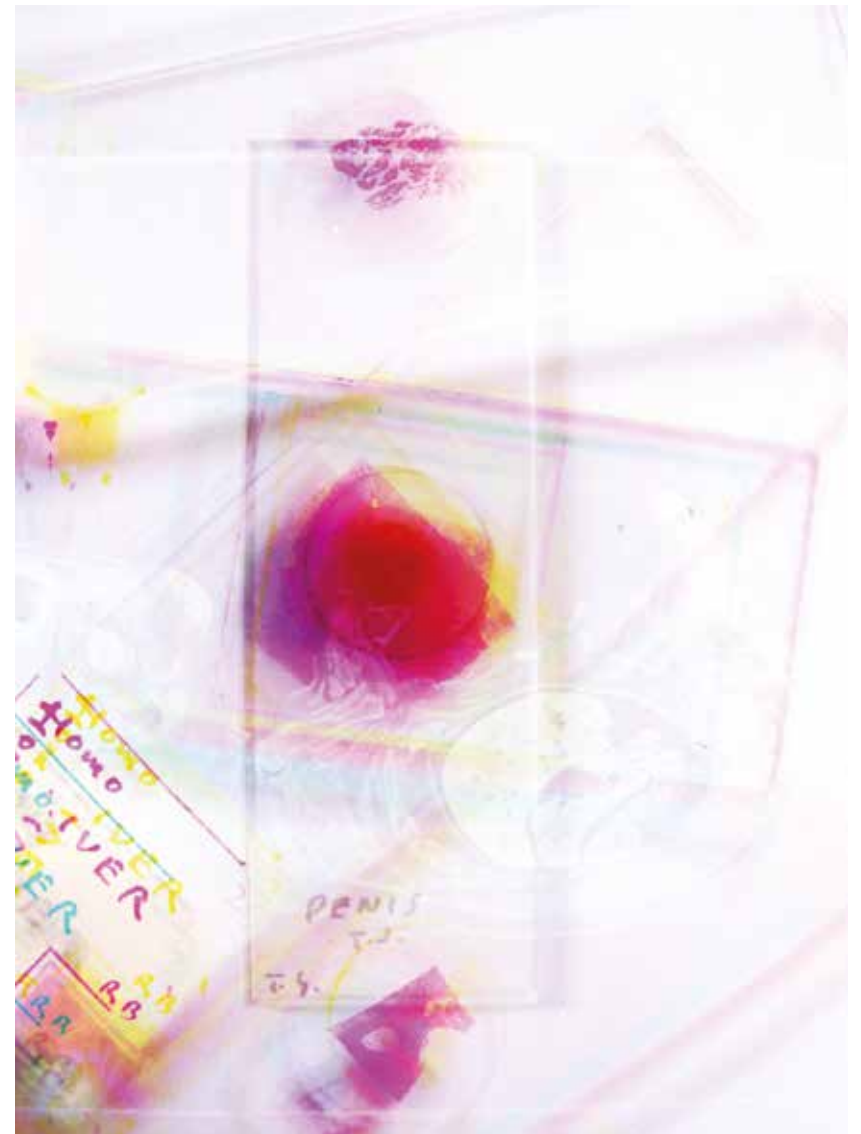
by

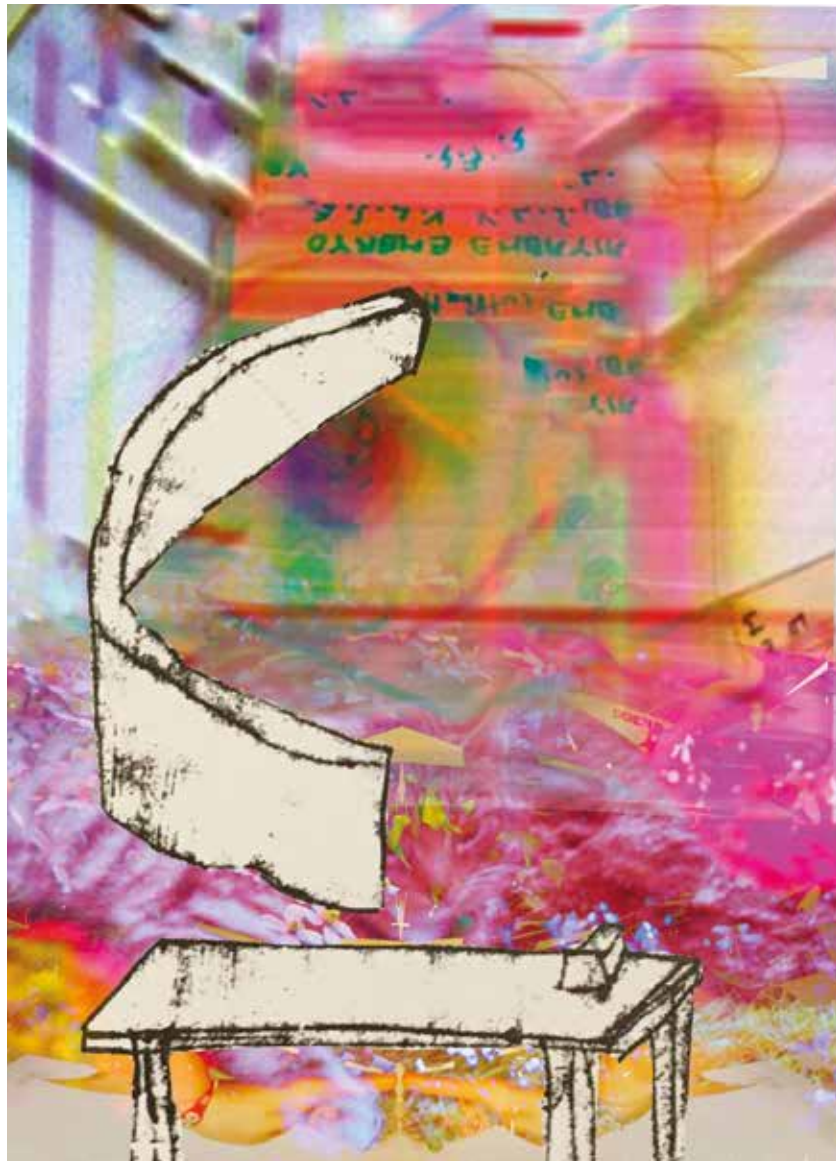
Charlie Hawksfield \ Héloïse Acher

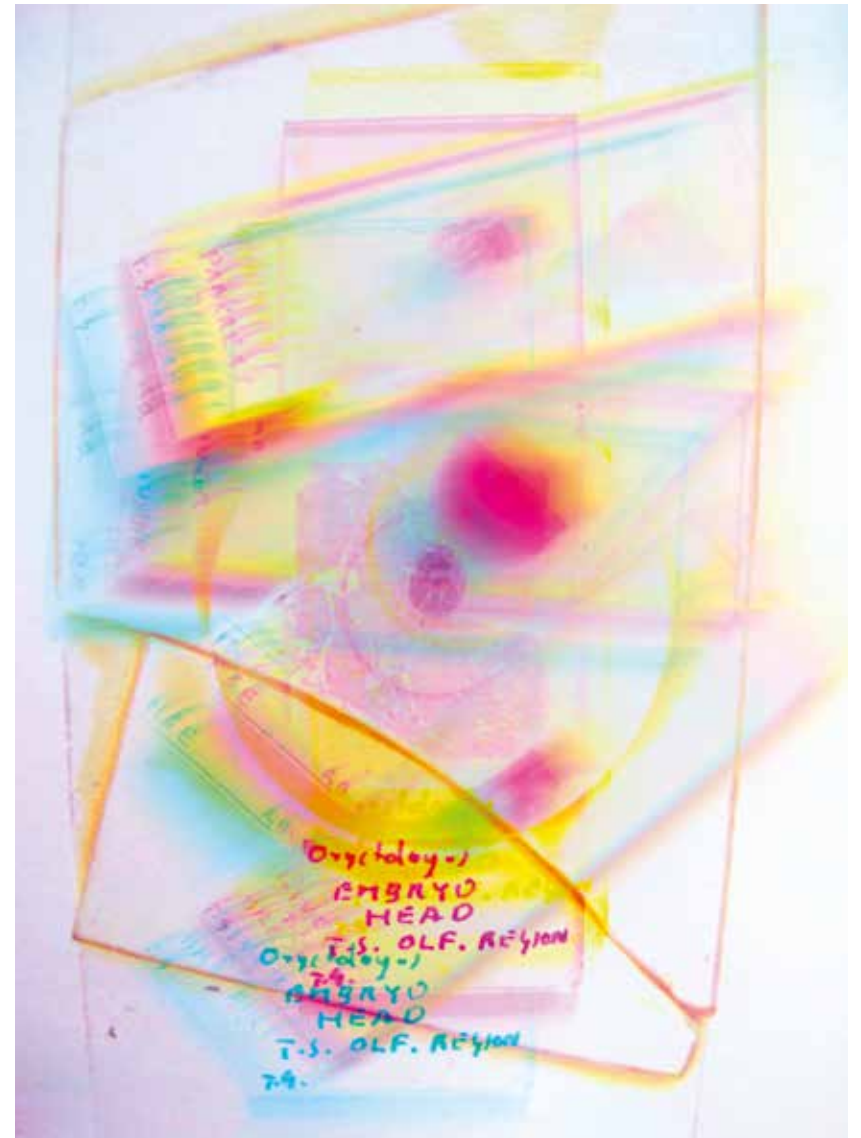
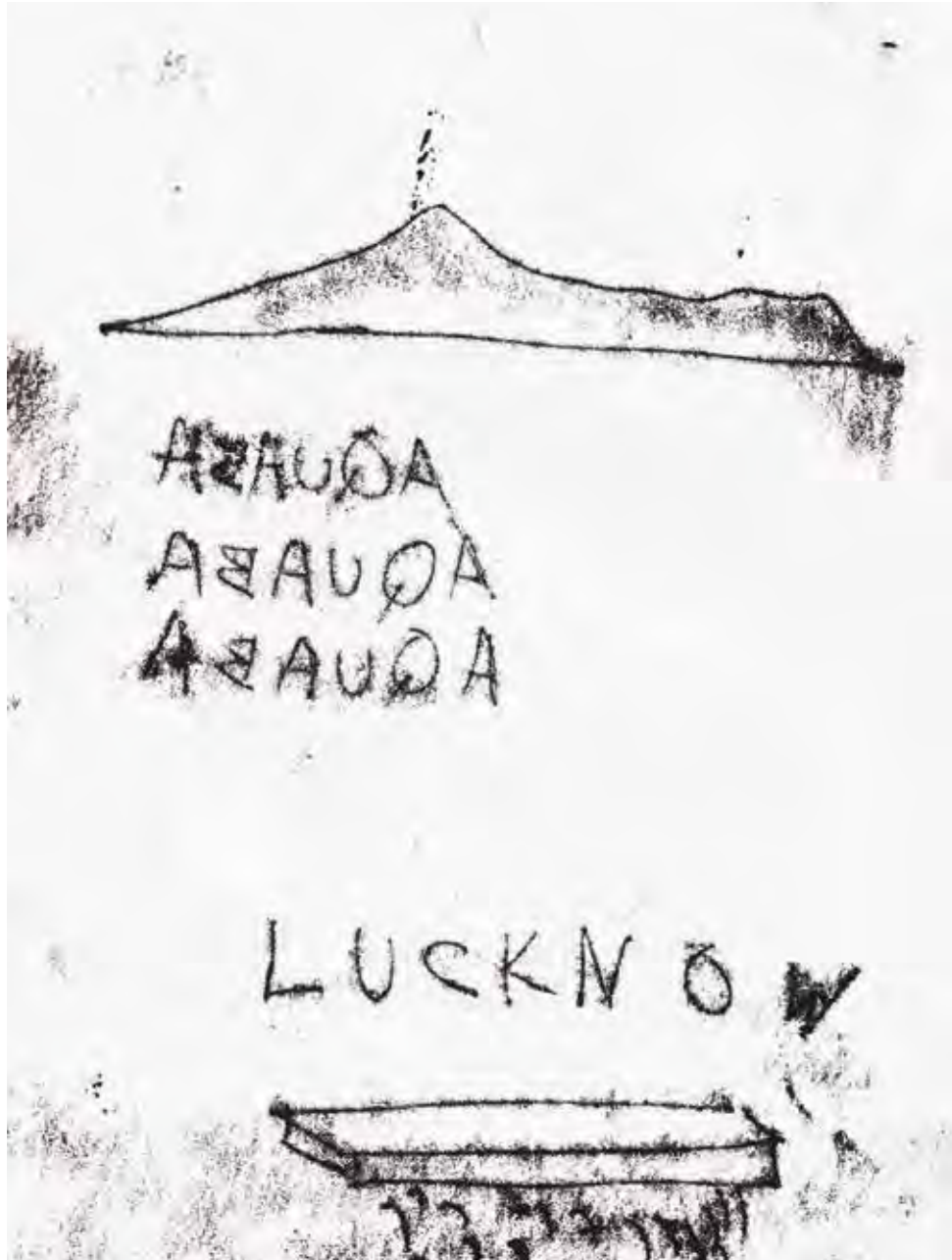






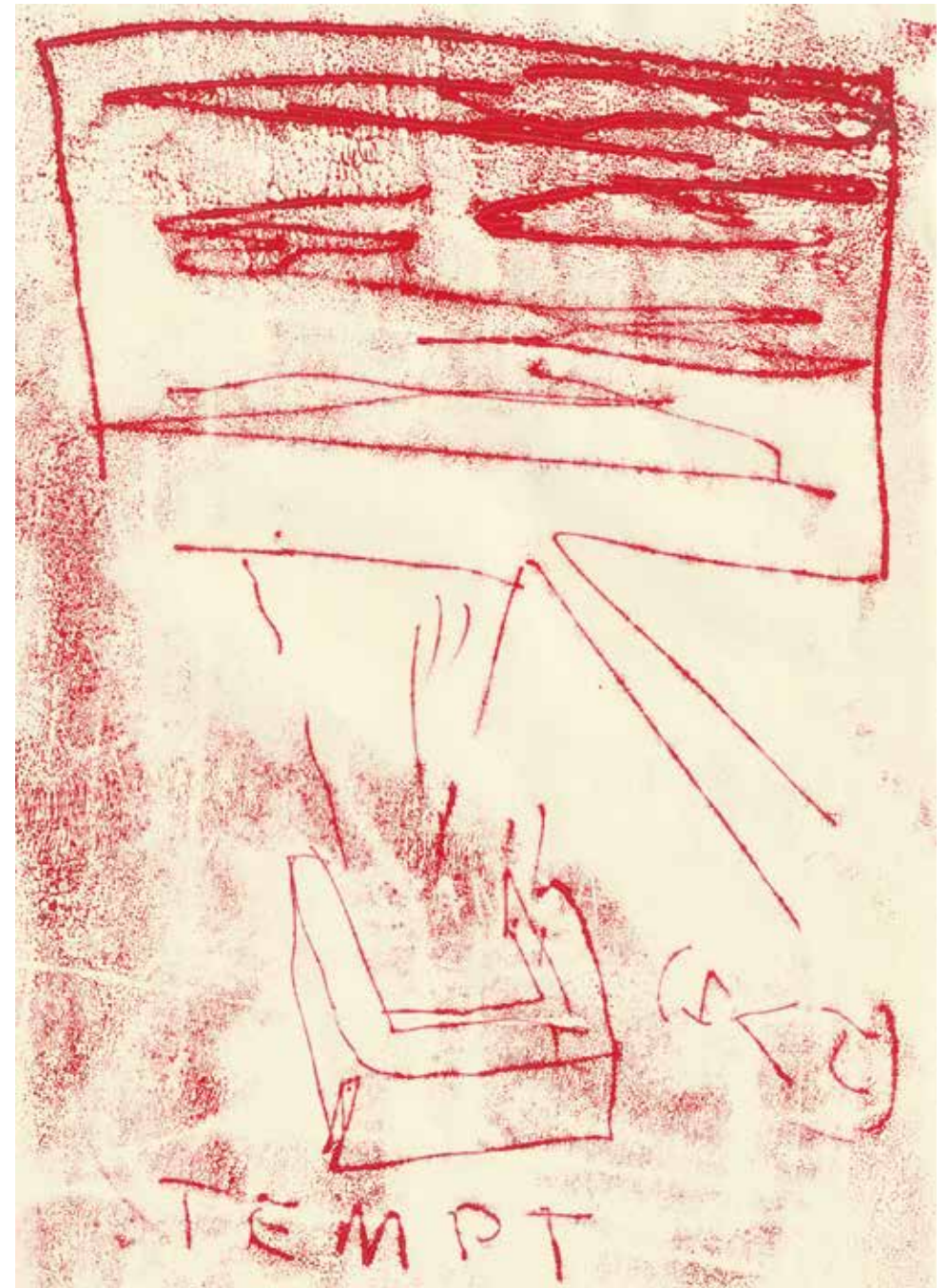
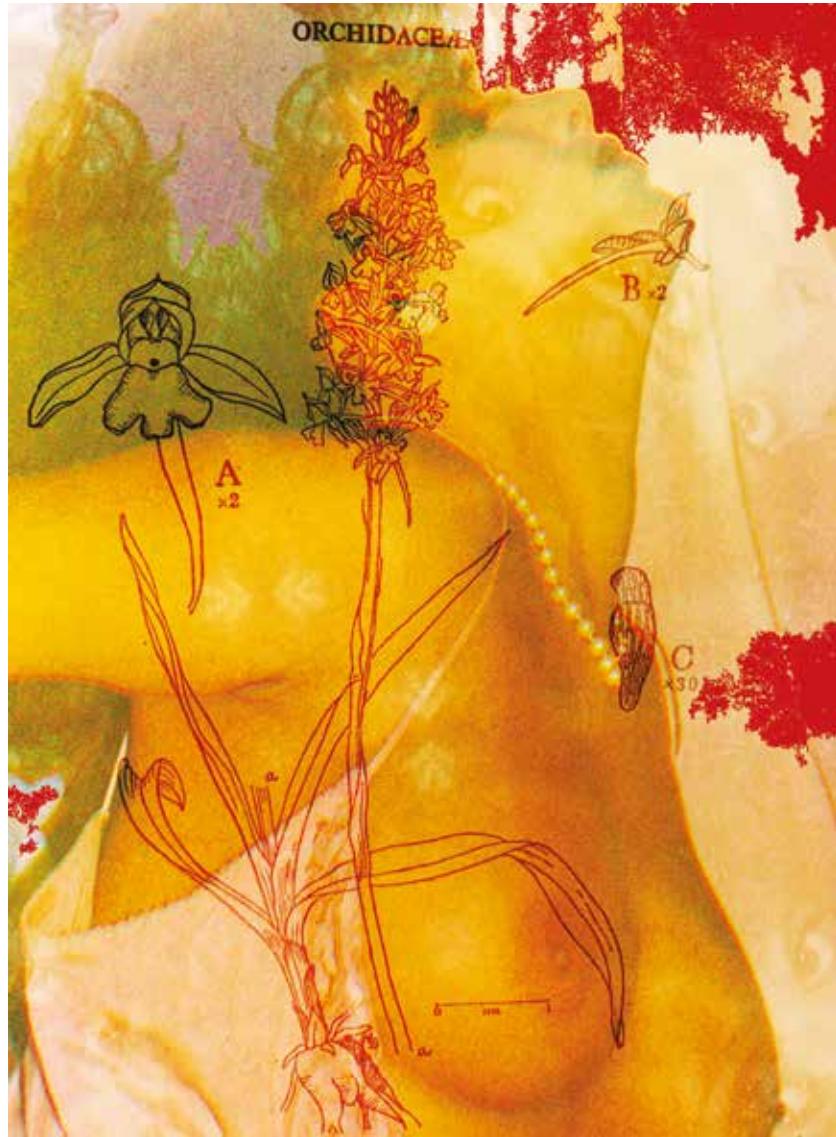


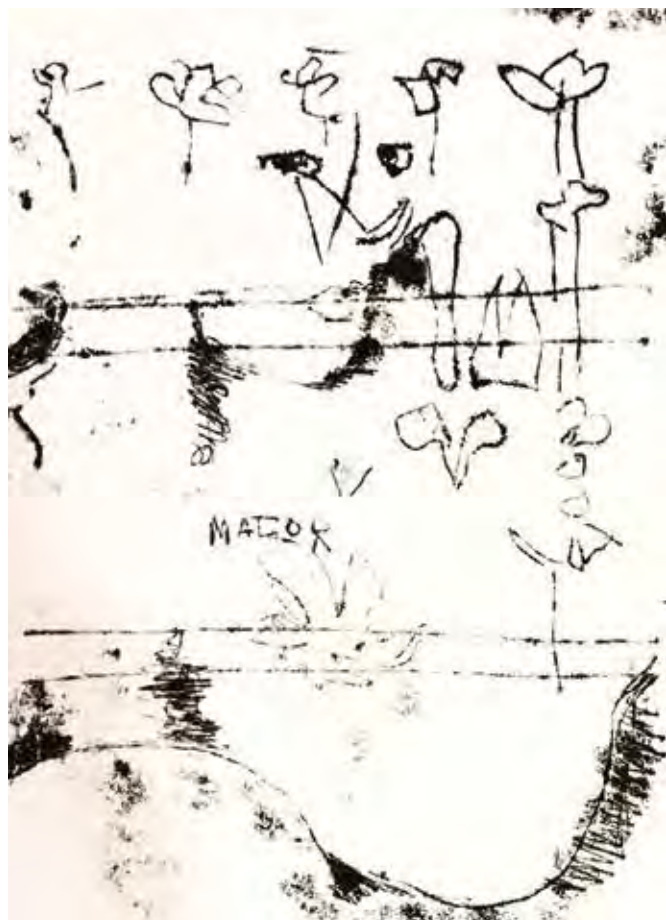


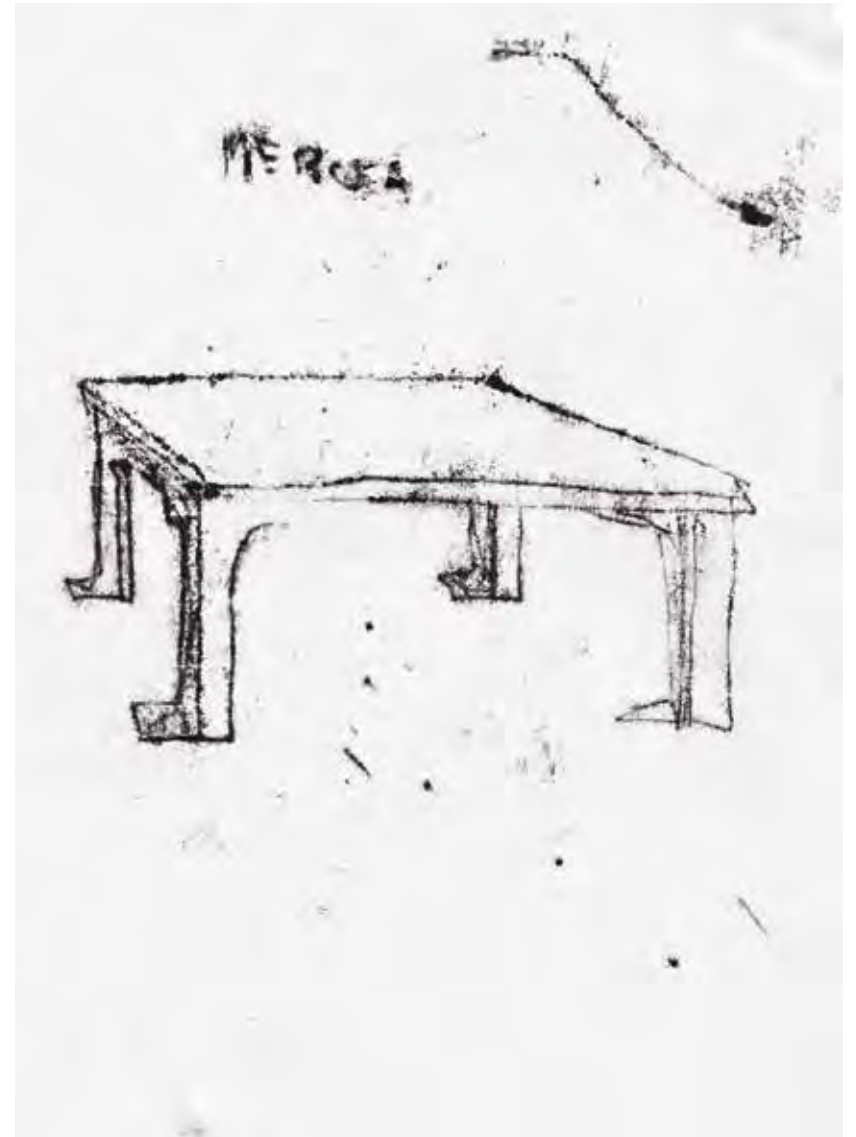






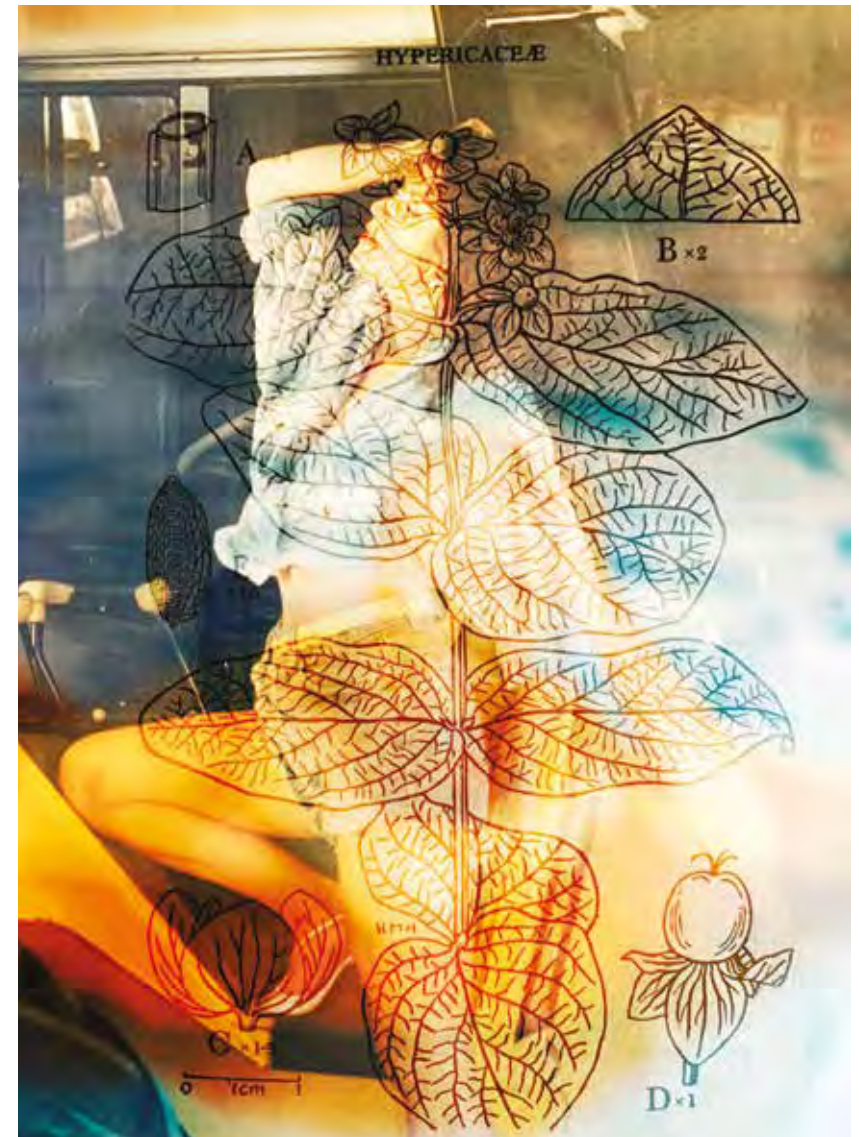






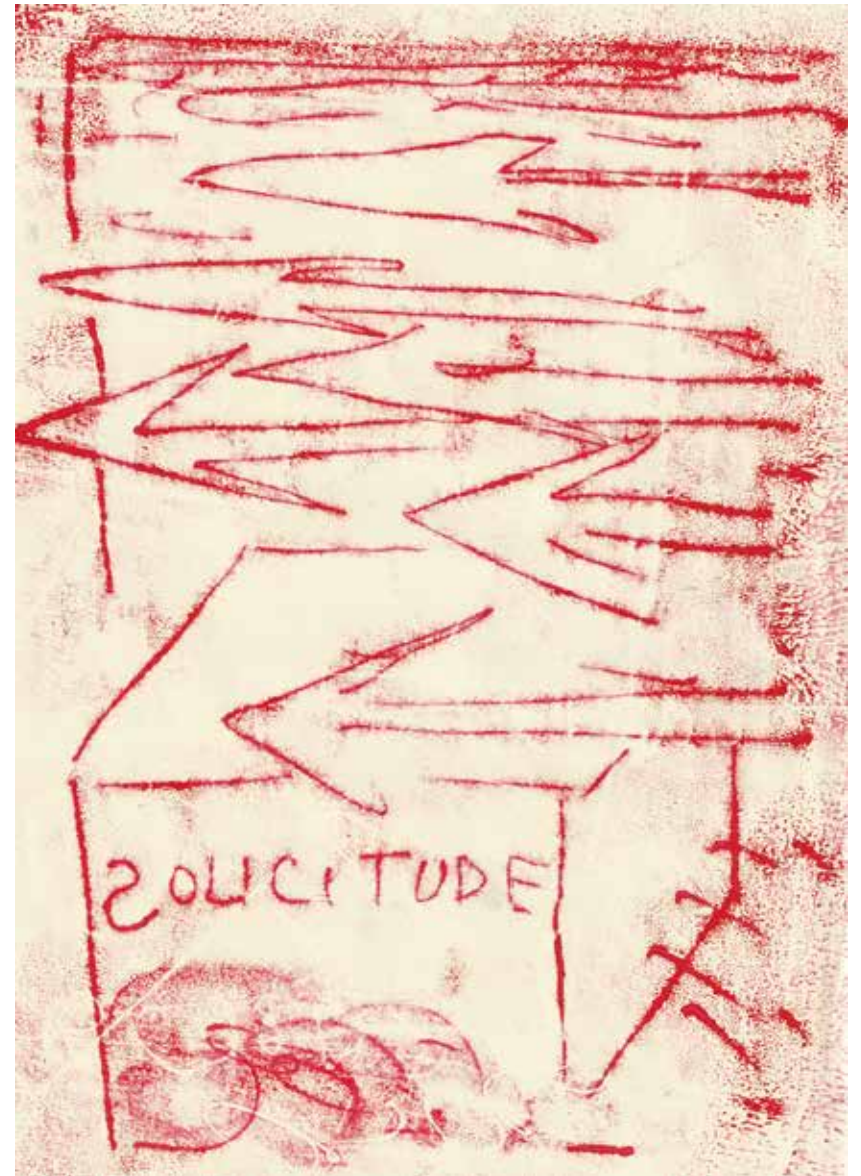






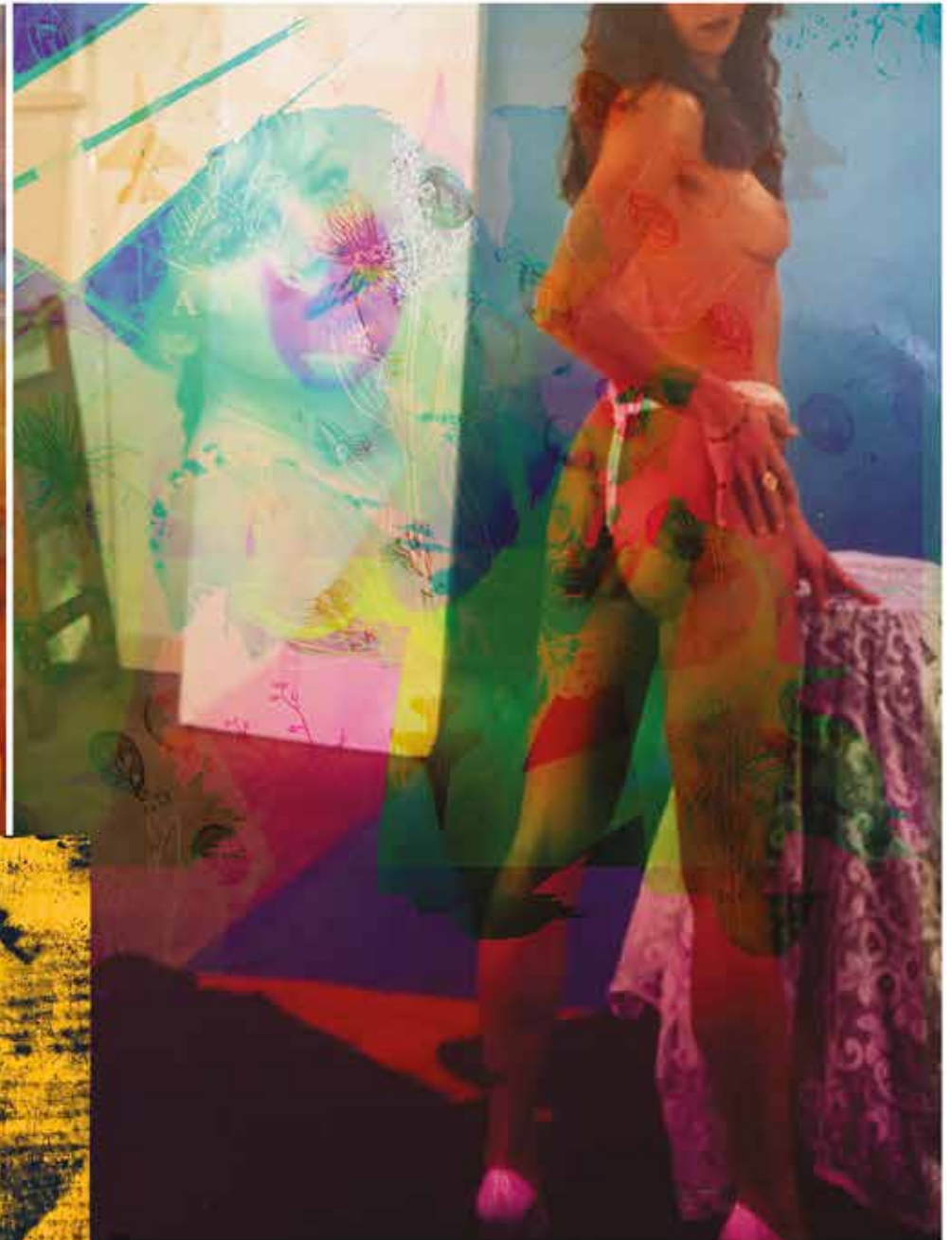
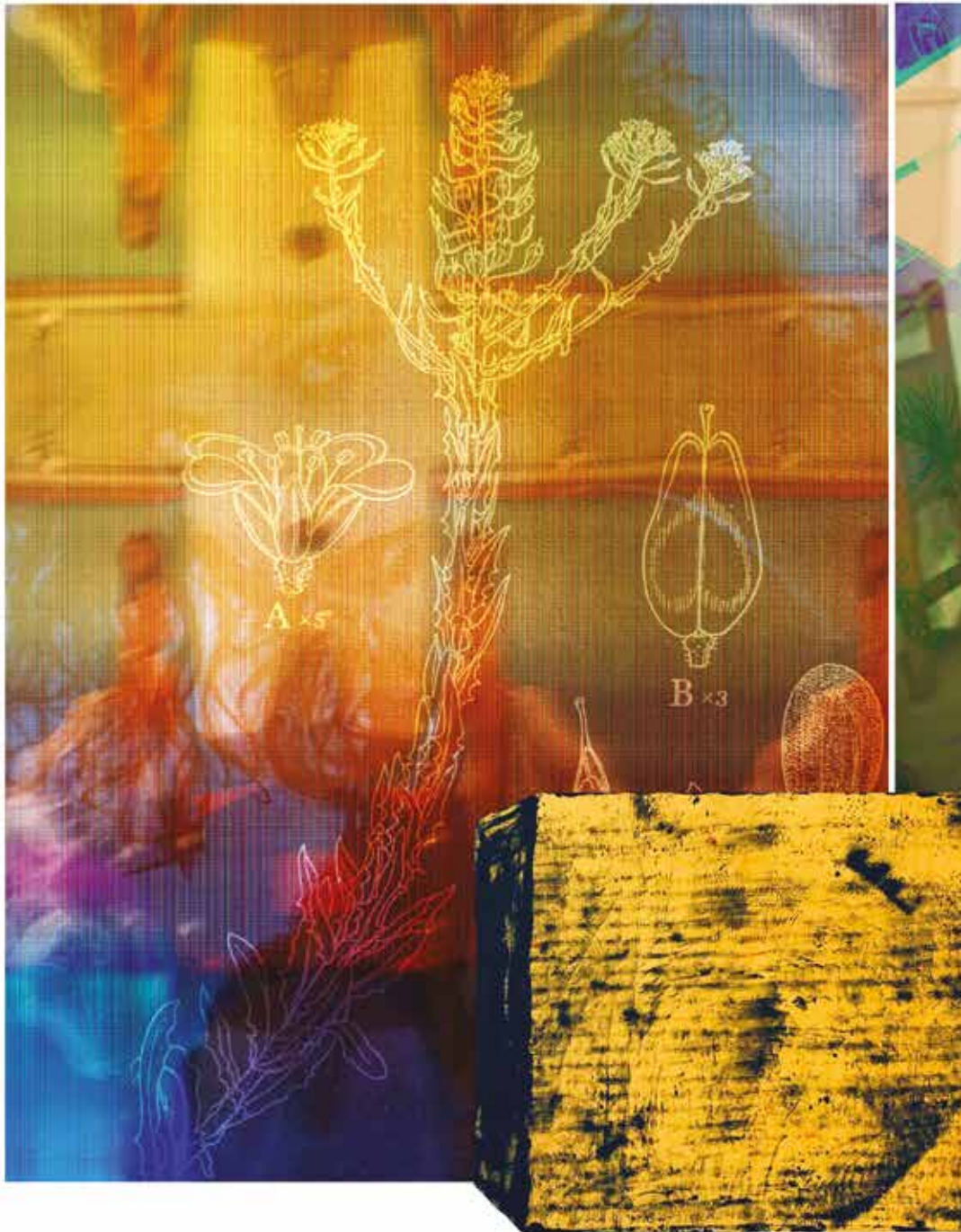














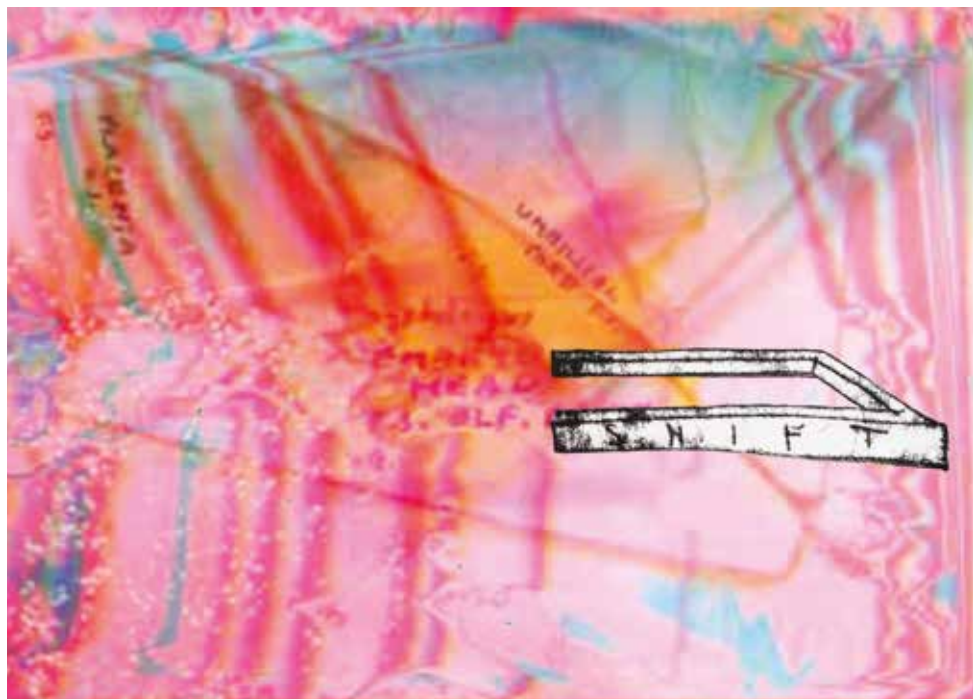
SUR\CHARGE

SUR\CHARGE is a collaboration between painter Charlie Hawksfield and photographer Héloïse Acher, gathering a selection of their experimental collaborative work.

Charlie has been working on a series of monoprints partly for the collaboration. The monoprints started as a drawing exercise, but grew into a body of work. He splits his time between his own practice and the running of Wells Projects; an artist led space in South London located in a disused nightclub.

With SUR\CHARGE, Héloïse explored a new approach to her photography work by creating images from existing material gathered from a junk market in London: Scientific slides with samples of body parts and embryos, floral and mountain pictures taken by the same scientist and photos of Page 3 models, mixed with botanical drawings. Old discarded materials with previous histories are given new life and form.

All images ©2020 Charlie Hawksfield & Héloïse Acher



Charlie Hawksfield

charliehawksfield@gmail.com

www.charliehawksfield.com

\

Héloïse Acher

heloise.acher@gmail.com

www.heloiseacher.com

