



HERE I  
AM

CREATED BY  
STEFAN ALEXANDER



the 1990s, the number of people who have been employed in the public sector has increased in all countries. The increase has been particularly large in the United States, where the public sector has grown from 10% of the total labour force in 1970 to 20% in 1995. In the Netherlands, the public sector has grown from 15% to 25% of the total labour force in the same period.

The increase in the public sector has been driven by a number of factors. One of the main factors is the increase in the number of people who are employed in the public sector. This is due to a number of reasons, including the fact that the public sector has become a more attractive place to work. This is due to a number of factors, including the fact that the public sector offers a more stable and secure job, and that it offers a better work-life balance.

Another factor is the increase in the number of people who are employed in the public sector. This is due to a number of reasons, including the fact that the public sector has become a more attractive place to work. This is due to a number of factors, including the fact that the public sector offers a more stable and secure job, and that it offers a better work-life balance.

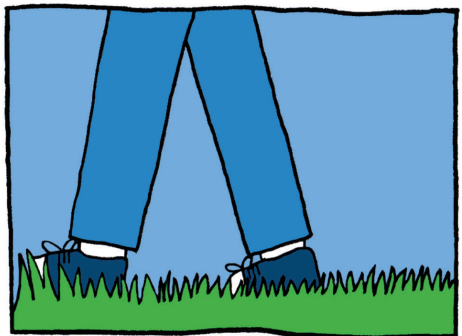
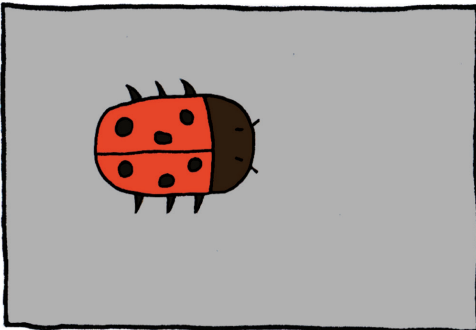
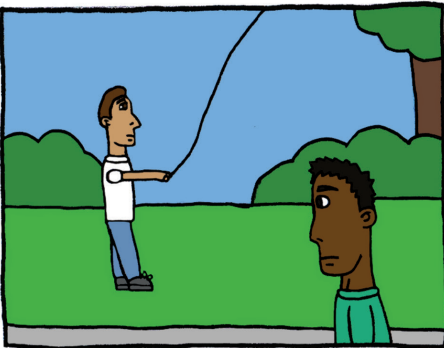
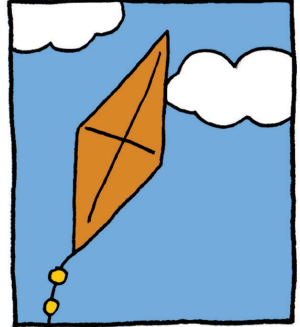
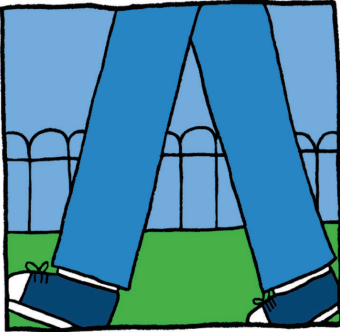
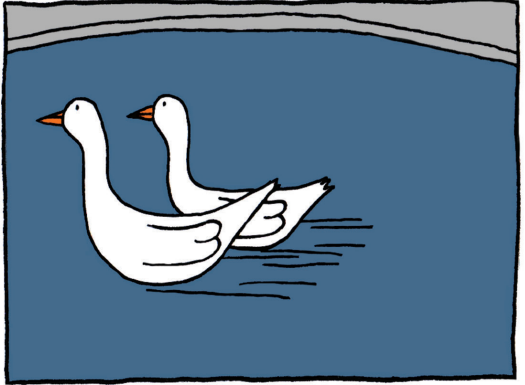
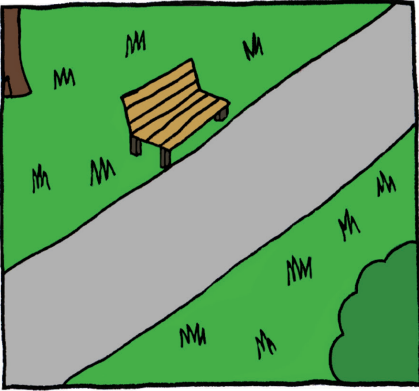
A third factor is the increase in the number of people who are employed in the public sector. This is due to a number of reasons, including the fact that the public sector has become a more attractive place to work. This is due to a number of factors, including the fact that the public sector offers a more stable and secure job, and that it offers a better work-life balance.

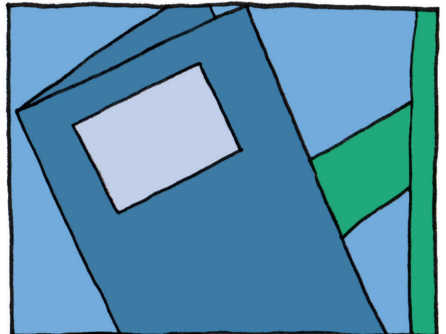
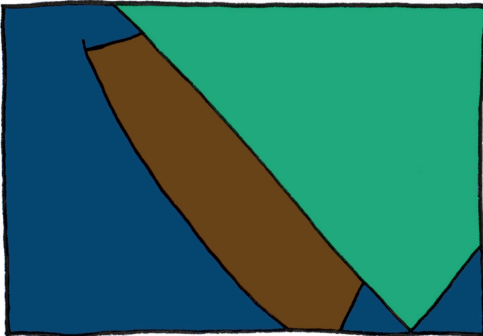
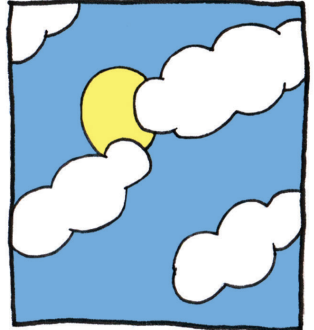
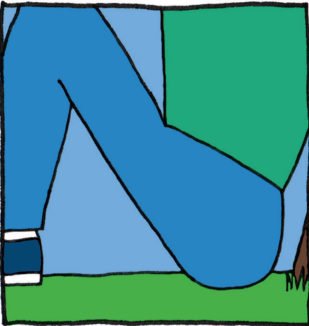
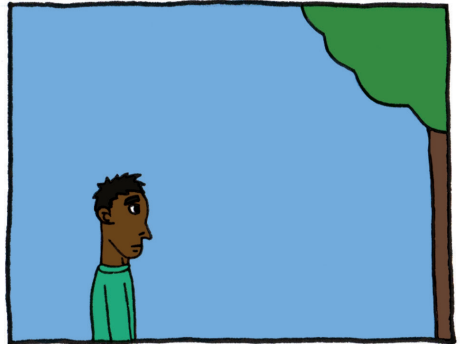
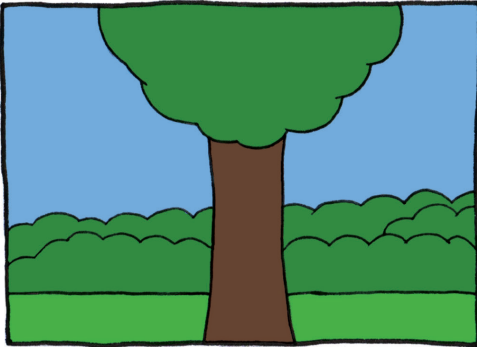
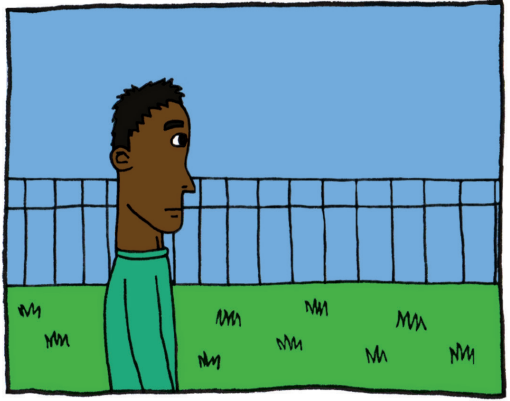
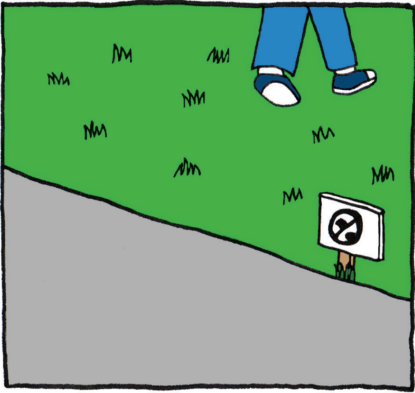
A fourth factor is the increase in the number of people who are employed in the public sector. This is due to a number of reasons, including the fact that the public sector has become a more attractive place to work. This is due to a number of factors, including the fact that the public sector offers a more stable and secure job, and that it offers a better work-life balance.

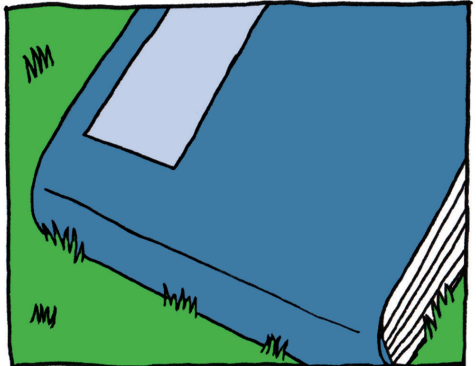
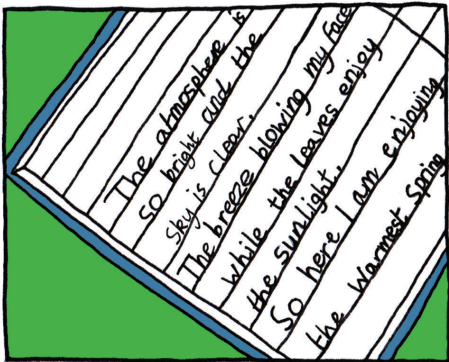
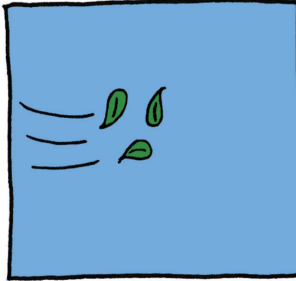
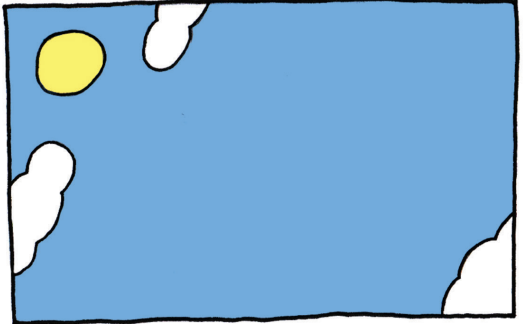
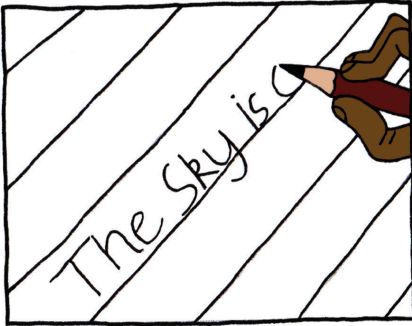
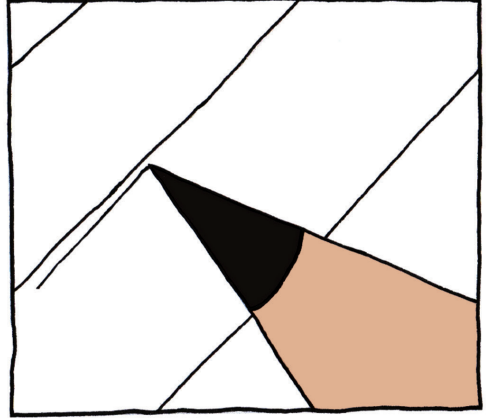
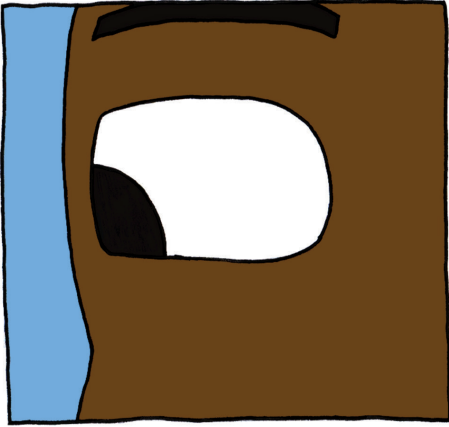
A fifth factor is the increase in the number of people who are employed in the public sector. This is due to a number of reasons, including the fact that the public sector has become a more attractive place to work. This is due to a number of factors, including the fact that the public sector offers a more stable and secure job, and that it offers a better work-life balance.

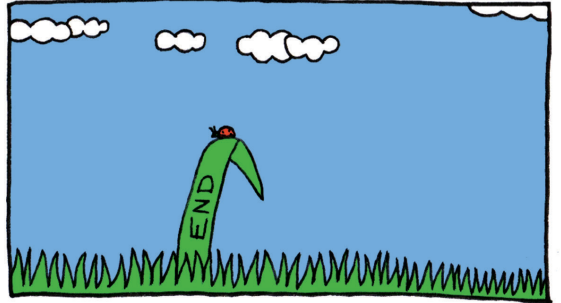
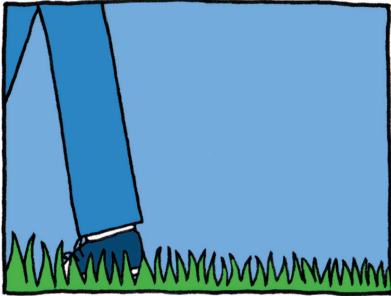
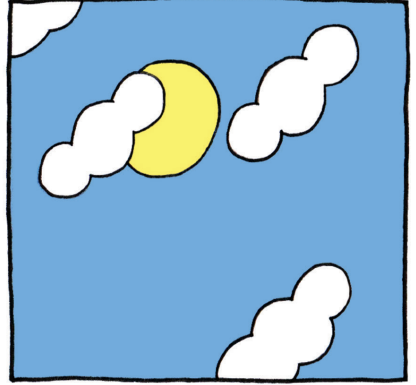
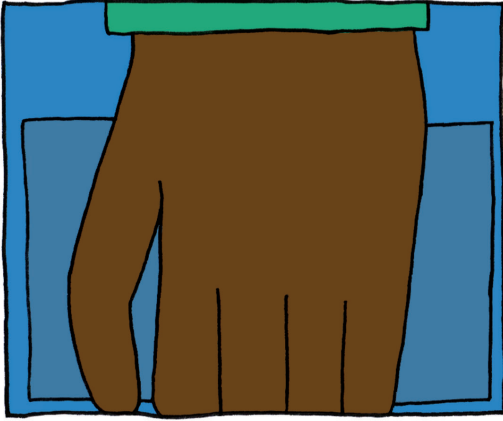
A sixth factor is the increase in the number of people who are employed in the public sector. This is due to a number of reasons, including the fact that the public sector has become a more attractive place to work. This is due to a number of factors, including the fact that the public sector offers a more stable and secure job, and that it offers a better work-life balance.

A seventh factor is the increase in the number of people who are employed in the public sector. This is due to a number of reasons, including the fact that the public sector has become a more attractive place to work. This is due to a number of factors, including the fact that the public sector offers a more stable and secure job, and that it offers a better work-life balance.









the 1990s, the number of people with a university degree has increased in all countries, but the increase has been most dramatic in the United States.

There are two reasons why the increase in university degrees is important. First, the increase in university degrees is a reflection of the fact that the economy has become more knowledge-intensive. Second, the increase in university degrees is a reflection of the fact that the economy has become more service-oriented. The service sector is more knowledge-intensive than the manufacturing sector, and it is more service-oriented than the manufacturing sector. The service sector is also more dynamic than the manufacturing sector, and it is more innovative than the manufacturing sector. The service sector is also more labor-intensive than the manufacturing sector, and it is more labor-intensive than the manufacturing sector.

The increase in university degrees is also a reflection of the fact that the economy has become more service-oriented. The service sector is more knowledge-intensive than the manufacturing sector, and it is more service-oriented than the manufacturing sector. The service sector is also more dynamic than the manufacturing sector, and it is more innovative than the manufacturing sector. The service sector is also more labor-intensive than the manufacturing sector, and it is more labor-intensive than the manufacturing sector.

The increase in university degrees is also a reflection of the fact that the economy has become more service-oriented. The service sector is more knowledge-intensive than the manufacturing sector, and it is more service-oriented than the manufacturing sector. The service sector is also more dynamic than the manufacturing sector, and it is more innovative than the manufacturing sector. The service sector is also more labor-intensive than the manufacturing sector, and it is more labor-intensive than the manufacturing sector.

The increase in university degrees is also a reflection of the fact that the economy has become more service-oriented. The service sector is more knowledge-intensive than the manufacturing sector, and it is more service-oriented than the manufacturing sector. The service sector is also more dynamic than the manufacturing sector, and it is more innovative than the manufacturing sector. The service sector is also more labor-intensive than the manufacturing sector, and it is more labor-intensive than the manufacturing sector.

The increase in university degrees is also a reflection of the fact that the economy has become more service-oriented. The service sector is more knowledge-intensive than the manufacturing sector, and it is more service-oriented than the manufacturing sector. The service sector is also more dynamic than the manufacturing sector, and it is more innovative than the manufacturing sector. The service sector is also more labor-intensive than the manufacturing sector, and it is more labor-intensive than the manufacturing sector.

The increase in university degrees is also a reflection of the fact that the economy has become more service-oriented. The service sector is more knowledge-intensive than the manufacturing sector, and it is more service-oriented than the manufacturing sector. The service sector is also more dynamic than the manufacturing sector, and it is more innovative than the manufacturing sector. The service sector is also more labor-intensive than the manufacturing sector, and it is more labor-intensive than the manufacturing sector.



HE WHO WONDERS  
AROUND THE OUTDOORS  
BECOMES CONNECTED WITH  
NATURE.  
SAM ENJOYS THE GREEN  
NATURE IN THE PARK AND  
LOOKS OUT FOR SPECIES AROUND  
HIM.

